

# RefectoCil®





GW Cosmetics®

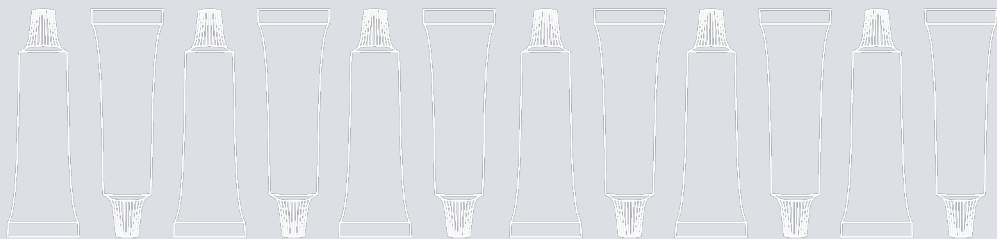
# Quality promise

The Research and development team at GW Cosmetics, Austria informed us that the formulation of the oxidative tint products has been the same for many years and nothing has changed only the packaging. They test each Batch made and do a test tinting as well. A Batch is not released if the results are not 100% according to the quality specifications.

So here are some guidelines to help you obtain better results.

RefectoCil® Facts

# Shelf life



# 12 months

Oxidative Tints, Oxidant Cream, Blonde Brow

The products might not provide good results after the expiry date.

**Tip:** write the date on these items to keep track of the date.

**Tip:** Close all lids tightly immediately after use.



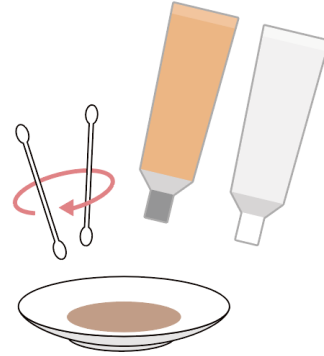
RefectoCil's

# Patch test

Recommended before the first application of tinting brows and lashes, eyelash curl/lift or brow lamination, or after an extended period of not using the products.

Apply a small amount of the individual components and a mixture of them (varies depending on the product) in the crook of your arm or behind the ear. If there is no reaction after 24-72 hours, the application can be carried out.

**Tip:** We recommend covering the tested area with a plaster.



Important prior to tinting

# Preparation of brows & lashes



Use **RefectoCil Micellar Eye Make-up Remover** is oil-free and the micelles magnetically attract make-up and dirt and transport nourishing substances into the skin.



Then clean with **RefectoCil Saline Solution** to degrease the areas and remove any residues so that you start working on a totally clean canvas. If not 100% clean, the results are compromised.

**Tip:** The hair must be dry before you start the tinting. Use a fan to speed up this process.



RefectoCil's

## Mixing ratio

2cm colour to 2cm Oxidant cream. They need to be mixed thoroughly into a creamy consistency.

Use Browista Palette for hands-free tinting which includes markings for the ideal mixing ratios.

The mixing ratio has to be exact and too much oxidant can effect the result.

If the RefectoCil Oxidative tint and Oxidant Cream 3% are mixed it is totally ineffective after 1 hour.

Tinting Tip

# Eyelashes

If the lower eyelashes are very short, keep the eyes open and apply the tint to the lower eyelashes with a rubber spoolie in the Browista Toolkit, just like you would apply mascara.

Then ask your client to close their eyes.

On the remaining lashes, evenly apply the tint with a brush in the direction of the hair growth, from base to tip.



Tinting Tip

# Eyebrows

Using the RefectoCil brush, apply the colour to the eyebrows evenly in the direction of hair growth.

Use a rubber spoolie in the Browista Toolkit, to comb through the eyebrows so the hairs are well covered with the colour.





Tips for tinting

# Timing

Everyone's hair structure is different, so the application time varies from person to person and whether it is lashes or brows. The longer the application time the more intense the result.

Start timing the colouring process after 1-2 mins as this gives the hair structure a chance to open and allows for the penetration and deposit of the colour into the hair shaft.

## 01

### Basics

An intense colour result on the lashes is 10 minutes. For brows 8 -10 minutes depending on the desired intensity.

## 02

### Warm colours

Red tones need longer to develop. The application time for RefectoCil No. 4.1 Red is 10-20 minutes and 10 minutes for RefectoCil No. 4 Chestnut.

## 03

### Playing it safe

Remove the tint from the end of the eyebrow after 2-3 minutes to check the results or show the client. If not intense enough let it stay on for longer.

## 04

### Note to self

Tinting time after a Lash Lift/Curl or Brow Lamination is reduced to a max of 2 mins but can be longer if the client wants an intense effect. Tinting time after using Blonde Brow is reduced to a third of the time.

Neat and tidy

# Application tips and tools



With **RefectoCil Tint Remover**, immediately remove unintentional skin stains easily.



The use of the self-adhesive **Silicone Pads by RefectoCil** protects the skin. Fits any eye shape and can be reused 100 times.

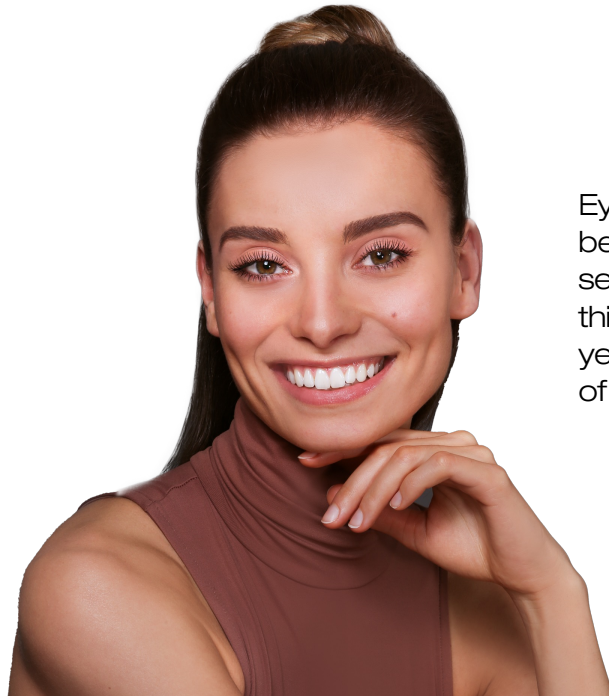


Neat and tidy

# Application tips and tools



Tinting of white/grey or bristly eyebrows: The covering of these hairs is not possible with a tint alone. They do not hold the colour as the other hairs do, so the remedy is to use **RefectoCil Blonde Brow** first to prepare the hair for easier penetration of the tint.



Eyebrows should not be tinted after using self-tanning agents as this may result in a yellowish discolouration of the skin.

Neat and tidy

# Application tips and tools



Always tint after a Lash Lift/ Curl or Brow Lamination treatment as the processing might lighten the hair.



Always shape after tinting.

Neat and tidy

# Application tips and tools



An eye massage is the perfect finish to a treatment using the **RefectoCil Skin Protection Cream and Eye Mask** with many benefits due to Aloe Vera, Vitamin E and D-panthenol.



The tint should last 4-6 weeks but various things will affect the duration of the colour: oily products to remove make-up, sweating after exercise and swimming.

Neat and tidy

# Application tips and tools



The colour fades over time like all hair dye does (after about 30 face washes). A strong face wash could affect the colour sooner. As the tint is very gentle on the hair it can be redone when the colour has faded before 4 weeks.

*Aftercare* **BROW LAMINATION by RefectoCil**

No water or steam  
Do not touch your eyebrows  
No makeup  
Avoid using exfoliating products or retinoids around your brows for 5 days  
Sleep on your back

Use a brow conditioner daily  
Brush eyebrows into shape with RefectoCil Styling Gel  
Avoid fake tanning products  
Avoid direct sunlight for 48 hours  
Schedule your next appointment

for 24 hours

**EYELASH CURL by RefectoCil** *Aftercare* **EYELASH LIFT by RefectoCil**

No mascara or any eye makeup  
Don't go swimming  
Don't rub your eyes  
Keep your lashes dry  
Sleep on your back or side

Use RefectoCil Styling Gel daily  
Avoid hot steamy showers or saunas  
No lotions, oils or creams  
Don't use oil based products  
Schedule your next appointment

for 24 hours

Follow the RefectoCil aftercare instructions for longer-lasting results after a Brow Lamination/Lash Lift or Curl treatment. Mainly, keep dry, no touching, no make-up, avoid direct sunlight and oily products.

Client info: Post tinting tips

# Need to know



Wait to wash. The longer you let the tinting product sit, the longer the colour will last. Wait at least 12 hours but 24 hours is ideal. This includes not sweating for 24 hours.



Avoid sun exposure. UV rays from the sun can fade the tint from your eyebrows. Shade your face and apply sunscreen. Be careful when applying spf & moisturiser, go around the brows.



Client info: Be gentle

# No harsh or exfoliating products



Avoid using harsh cleansers or exfoliating skincare products (AHAs, BHAs, retinol etc). Exfoliants decrease the longevity of your eyebrow tint. Rather use gentle facial products and avoid applying them directly on the brow.



Avoid rubbing or touching for 24 hours post-tint. Don't over-brush between your brow tinting appointments. Too much brushing can lift the tint.

Client info: It's in your DNA

# Skin & hair types



Results vary based on the length, fullness, thickness and growth structure of your brow hair. Some hair will hold pigment longer resulting in longer-lasting results. While some hairs won't absorb the pigment as much, resulting in the tint fading quicker.



Results also vary depending on skin type. Those who have a more oily skin type may result in the tint fading faster than someone with dry skin. Someone with dry skin who uses a thick moisturiser may also notice the tint fading faster.



Dare to Care

# Repair and Care



Styling Gel

Sold to your customer, apply every day as it helps to seal the colour and nourish the brows & lashes. As we condition the hair on our head, so we should do the same for lashes & brows. Use on your customer after a tinting treatment.



Care Balm

Sold to your customer, first apply 24 hrs after a tinting treatment due to the high oil content which could negatively influence the colouration results. Then, nightly, nourish your brows with this intense castor oil treatment.



Lash & Brow Booster

2:1 double effect  
Up to 56% longer lashes  
With natural active substances  
if your clients need longer  
lashes and thicker brows.

No products  
must be left  
in sunlight or  
stored in a  
hot place.

@refectocilsa  
[www.refectocil.co.za](http://www.refectocil.co.za)

**RefectoCil<sup>®</sup>**